

A close-up, low-angle shot of the side of a yellow school bus. The word "SCHOOL" is printed in large, bold, grey capital letters along the side panel. The bus has a blue trim along the bottom edge. The background is slightly blurred, showing the ground and other parts of the bus.

School Traffic Safety

- Quail Summit School Traffic Circulation Plan

The Do's & Don'ts of student drop-off



Quail Summit School Traffic Circulation Plan – DROP OFF LOCATIONS

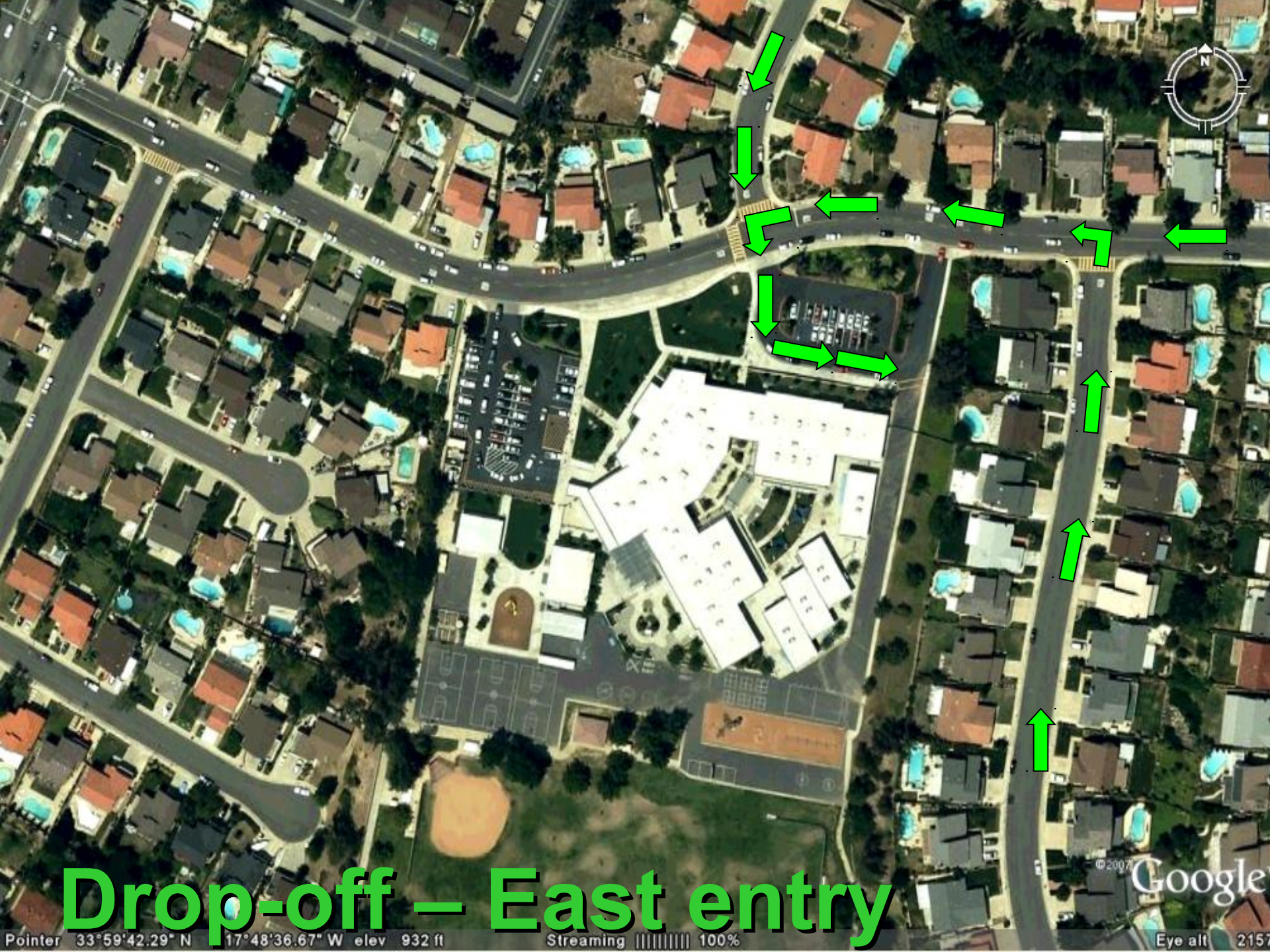


West
parking lot

East
parking lot

Drop-off – West entry





Drop-off - East entry



**Drop-off
East & West entrance**

Drop Off Zones



NATIONAL
BLUE RIBBON
SCHOOL



Walk students to school

Tips for quick drop-off

- Pull completely forward
- Have backpacks, lunch ready
- Give hugs at home
- Exit on right side only
- Make sure child is safely out of car
- Make sure doors are closed

**PULL FORWARD
BEFORE
STOPPING AT
PICKUP AREA**

Drop-off quickly & safely



Pull forward as far as possible

Have back packs ready



Exit right side only

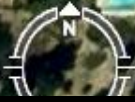




East parking lot – Right turn only

West parking lot – Left turn only

Drop Off Exit



© 2007 Google

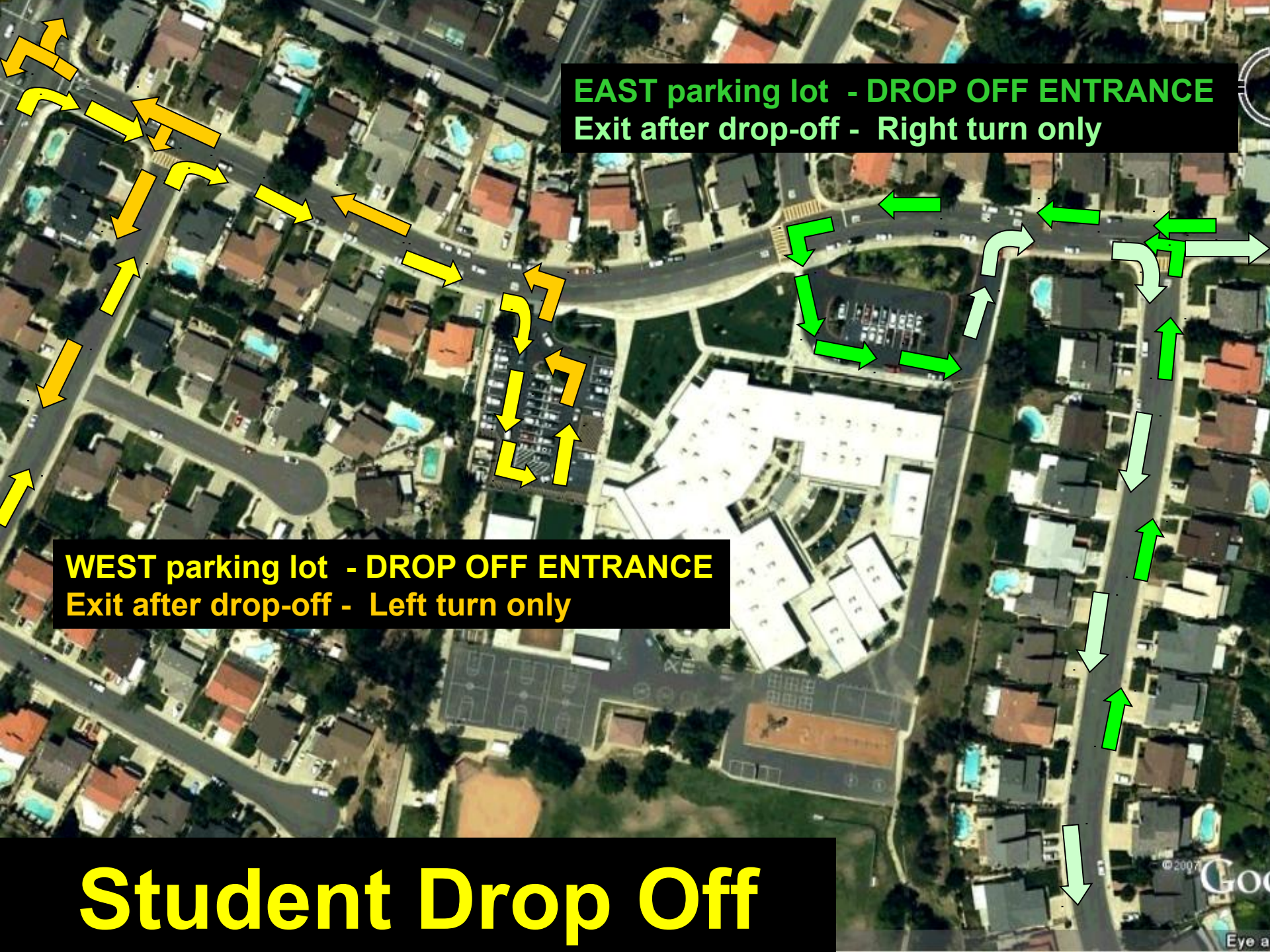
0%

Eye all 2157 ft

EAST parking lot - DROP OFF ENTRANCE
Exit after drop-off - Right turn only

WEST parking lot - DROP OFF ENTRANCE
Exit after drop-off - Left turn only

Student Drop Off





CAUTION –

***Be aware of children in
crosswalks***



STOP



STOP

CROSSING
GUARD

NO PARKING
EXCEPT FOR
EMERGENCY VEHICLES
OR VEHICLES OF
OFFICIALS
OR POLICE
OR FIRE DEPT.

5J06167

A photograph of a bird, possibly a sparrow or similar small bird, perched on a thin branch. The bird is facing right and has a mix of brown, grey, and white feathers. In the background, there is a blurred green landscape and a nest made of twigs and dried grass, partially visible on the left side. The text "Student Pick Up" is overlaid in a large, bold, blue font with a black drop shadow.

Student Pick Up



Parking Areas



Parents waiting to pick up students must pull forward in loading lane

Loading lane for pick up



Parking lot entrances closed



PULL FORWARD
BEFORE
STOPPING AT
PICKUP AREA

YORK

Parents waiting for students



NO STOPPING in fire lane

Loading lane





Don't stop – no waiting

Blocking traffic

No stopping in traffic lane

Wrong side of roadway



Potential accident



Cost for bus transportation
\$125/Semester = \$250/Year
\$1.38/Day

Cost for driving your vehicle
.55/Mile
1.5 Mile Trip x 2 = \$594/Year
\$3.30/Day



Safety First!

No U-Turns

No 3 Point Turns

No Jaywalking

QUAIL SUMMIT

23330

EAST

School Traffic Safety



Presented by the

LA County Sheriff's Department & the City of Diamond Bar

In cooperation with Walnut Valley Unified School District

June 2, 2009